

CHERRYWOODS

by

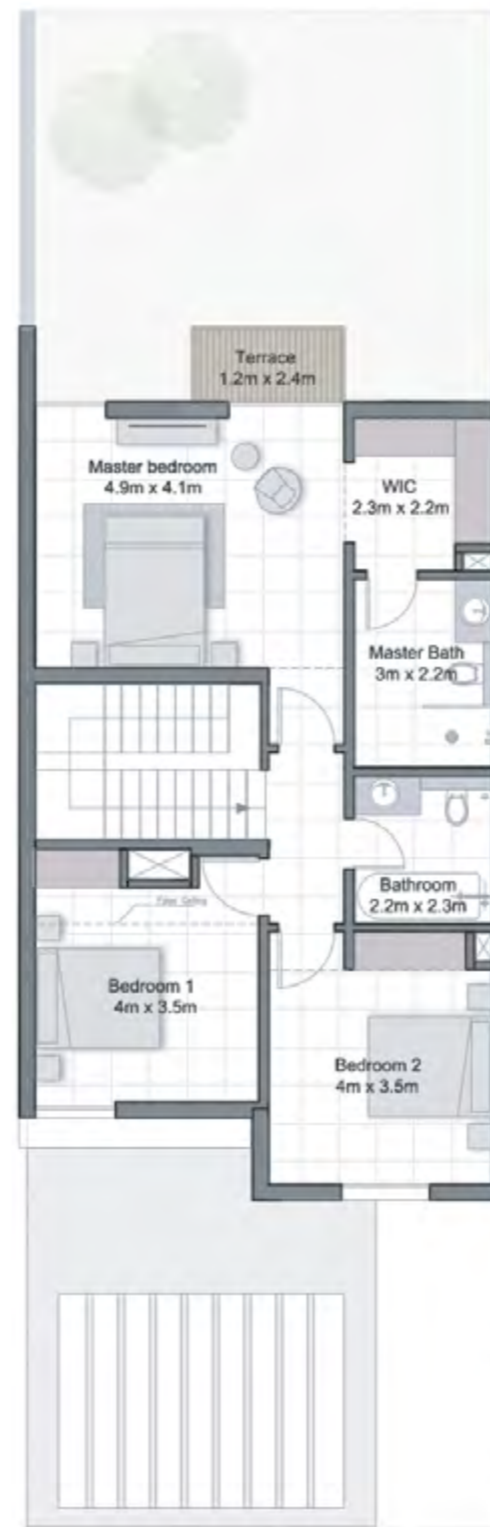
||| MERAAS

Floor Plans

CHERRYWOODS



GROUND FLOOR



FIRST FLOOR

3 BEDROOM MIDDLE UNIT

TOTAL AREA : 2,233 sq.ft.



CHERRYWOODS



GROUND FLOOR



FIRST FLOOR

3 BEDROOM CORNER UNIT

TOTAL AREA : 2,367 sq.ft.



DISCLAIMER: PLAN AND DETAILS INCLUDED ARE INDICATIVE ONLY AND ARE SUBJECT TO CHANGE BY THE DEVELOPER/SELLER AT ITS SOLE DISCRETION WITHOUT NOTICE AND/OR LIABILITY. ALL IMAGES, INCLUDING FEATURES, FINISHES, FURNISHINGS AND SCALE ARE ILLUSTRATIVE ONLY. FINAL AREAS, DIMENSIONS, LAYOUT AND MATERIALS MAY DIFFER FROM THOSE STATED.

CHERRYWOODS



GROUND FLOOR



FIRST FLOOR

4 BEDROOM CORNER UNIT

TOTAL AREA : 2,634 sq.ft.





T: +971 4 871 9200 | 800 DANDB

M: +971 56 520 3470

www.dandbdubai.com

